

**Sight Glass Fittings, circular,**  
acc. to **DIN 28121**  
to be **mounted** to existing **DIN**-flanges



**Bauform 121**

**Application:**

For observation and lightning the inside of closed containers ( boilers, tanks, silos a.s.o ). Fitting will be delivered totally mounted and must only be screwed on an existent flange.

**Operating conditions:**

Working pressure: 10 bar or 25 bar  
Working temperature: 200°C

**Certificate: ( Option )**

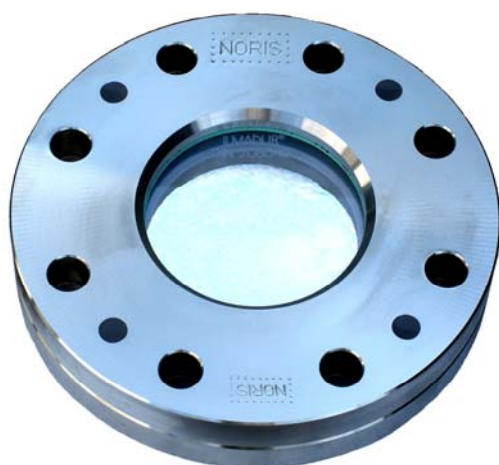
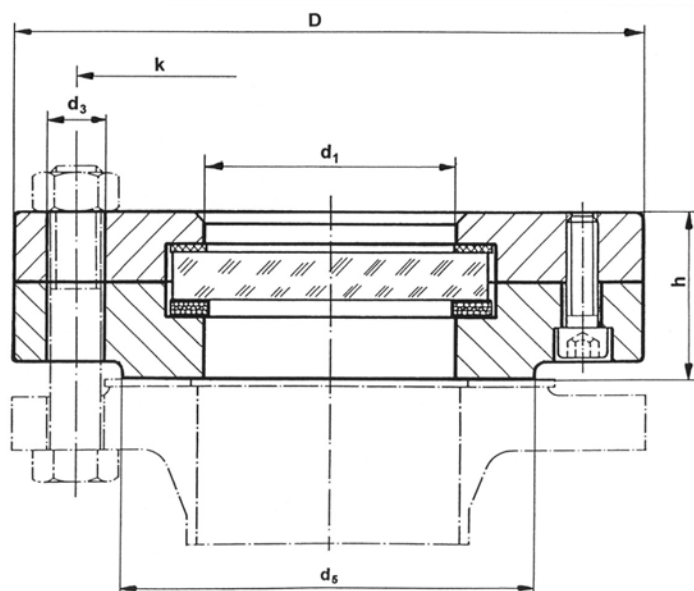
Acc. to EN 10204-2.2 or  
Acc. to EN 10204-3.1

**Materials:**

Base and  
Cover flanges: Steel / Stainless Steel 1.4571  
or other materials  
Sight glasse: Borosilicate glass  
acc. to DIN 7080  
Gasket: PTFE enveloped gasket (up to 200°C)

**Options:**

- Flanges with groove or tongue a.s.o.
- Spezial design for more then 200°C
- bigger sizes ( DN 250 a.s.o. )
- Safety double windows
- Sight glass light fittings
- Base-flange lined
- acc. to ANSI-connection



**Dimensions**

DN	bar	D	d <sub>1</sub>	d <sub>5</sub>	h	k	d <sub>3</sub>
<b>40</b>	10	150	48	88	36	110	4 x Ø 18
	25				38		
<b>50</b>	10	165	65	102	38	125	4 x Ø 18
	25				41		
<b>80</b>	10	200	80	138	46	160	8 x Ø 18
	25				50		
<b>100</b>	10	220	100	158	46	180	8 x Ø 18
	25	235		162	59	190	8 x Ø 22
<b>125</b>	10	250	125	188	54	210	8 x Ø 18
	25	270		66	220	8 x Ø 26	
<b>150</b>	10	285	125	212	54	240	8 x Ø 22
	25	300		218	66	250	8 x Ø 26
<b>200</b>	10	340	150	268	54	295	8 x Ø 22
	25	360		278	66	310	12 x Ø 26

Modifications reserved

