

## Thermostatic bimetal steam traps type BF45/BF46

BF45/46

### Application and function

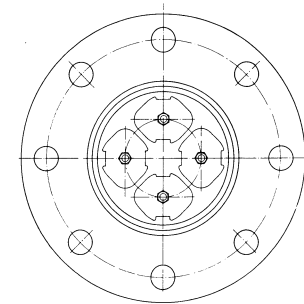
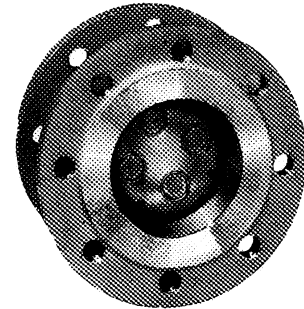
The thermostatic bimetal steam traps are generally used to drain big radiators, in paper factories, drying presses as well as in all chemical plants with large heating capacity.

The bending of the bimetal changes by temperature differences.

Thus the valve is opened and closed.

### Technical basic equipment

- 4 bimetal columns
- Intermittent practice
- Very large capacity
- Extremely small length
- High expectancy and reliability
- Strainer with large surface



### Technical data

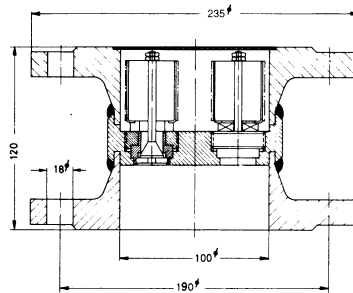
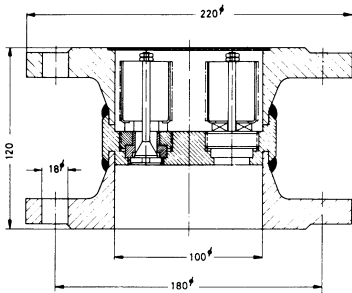
Type		BF45	BF46
Nominal diameter	DN	100	
All. pressure	PS [bar]	0-13	0-21
All. temperature	TS [° C]	300 (DIN 2401)	400 (DIN 2401)
Dimension	[mm]	120	
Connection		Flanges as per DIN 2633/2635	
Housing		C22.8 (1.0460)	
Cap material		C 22.8 (1.0460)	
Inner parts		Corrosion and acid resistant CrNi-steel	
Bimetal		Bimetal „RGR“ plated with stainless steel	
Undercooling		12K	



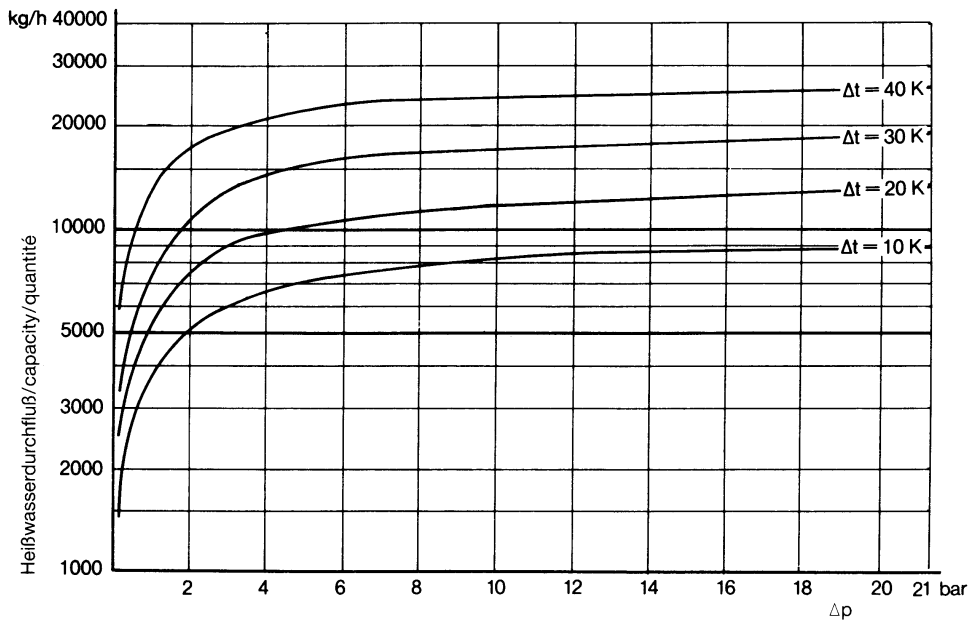
Dimensions

BF45

BF46



Capacity



Type	Article no.	DN	PS [bar]	Spare parts
				Bimetal column
				Article no.
BF45	K-12-10-L7	100	13	15-02856
BF46	K-12-10-L4		22	

